



---

## Quality Manufacturer of Pre-Hung Doorsets, Doors and Screens

Bridgman IBC Limited is a leading UK manufacturer and supplier of fire rated doors, doorsets, extended performance doorsets and fire rated glazed screens. Whether you require quality executive doors, laminate faced doorsets, fire rated and robust glazed screens, or resilient security doorsets, Bridgman IBC Limited can meet all your requirements.

All of our products are produced to the highest quality standards. Our fire rated products all conform to BS 476 Part 22. We have BS EN ISO 9001: 2008 and BS EN ISO 14001: 1996 accreditation.

Bridgman IBC Limited is a member of BM Trada Q-Mark; a third party fire door set accreditation scheme approved by UKAS.



# Doorsets

Bridgman IBC take the problems out of doorset specification. Simply let us know your requirements, and we are able to **manufacture to order.**

That means a factory pre-hung doorset delivered to site in your choice of materials and finishes, fire ratings from FD30s to FD120s and acoustic ratings of 30dB to 41dB.

Technical staff are on hand to provide expert specification advice concerning materials and component selection together with design and technical support to ensure your doorset are co-ordinated with your project.

**Simply select your components – door core, door facing, vision panel layout, frame type,**

**frame material, architrave profile, frame finish, ironmongery preparation where required and fire rating – then leave the rest to us.**

No matter how straight forward or complex your project, every single doorset ordered with Bridgman-IBC Ltd is pre-hung in our UK factory so that when we deliver to you, you can have every confidence that you know you're getting a doorset solution that **works.**

Call 01429 221111 to speak to our experienced doorset team to guide you through our products.



# Why use Bridgman-IBC for Doorset, Doors and Screen Supply?

We are a totally bespoke, made to order doors, doorset and glazed timber screen manufacturer.

Every single one of our doorsets are pre-hung in our factory to make sure all tolerances are correct before we deliver to your site.

Our product is fully certified for Fire, Acoustic, FSC, PEFC, DDA compliance.

We have very competitive lead times. Standard for doorsets is 4 to 6 weeks from full and final details, doors only is only 3 weeks. However we are flexible where we can be, so speak to us.

We are one of only a limited amount of suppliers that provides hygienilac to all our veneered doors and lacquered hardwood frames.

We have a top of the range CNC machine with 1000s of programmes for different ironmongery preparation.

We are one of only a limited number of companies who manufacture the traditional flax board core with internal softwood stiles and rails for ironmongery provision. However we can still offer a wide range of other door cores to specifically suit your needs and the doors environment.

With 100,000 ft² of factory and offices, we can press up to 1000 doors a week, capacity isn't a problem.

## Doorset Certification & BIM Modelling

### At Bridgman IBC we pride ourselves on our certification.

As a member of BM Trada we rigorously test our doorsets so that what we deliver to you, we can certify to the highest possible standard.

Our certification includes for:

**Chain of Custody**  
**FD30 fire and smoke**  
**FD60 fire and smoke**  
**FD90 fire and smoke**  
**FD120 fire and smoke**  
**Q Mark fire doors scheme**  
**CE approved external doorsets**  
**DD171**  
**ISO 9001**  
**ISO 14001**



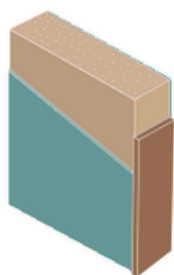
In preparation for the forthcoming Government legislation in 2016 that states all public contracts are to be run to a BIM level 2 standard, Bridgman IBC have launched a series of pre-hung doorsets that have level 2 BIM models. Bridgman-IBC will be able to supply the data in a format to suit the end user which includes Industry Foundation Classes (IFC) and Construction Operations Building Information Exchange (COBie).

The models are free to download and are also supported by RIBA NBS Plus scheme which will take the hassle out of specification for FD30 and FD60 pre-hung / doorsets. To access the BIM models please contact us on **01429 221111** or email **[sales@bridgman-ibc.com](mailto:sales@bridgman-ibc.com)** for further details.

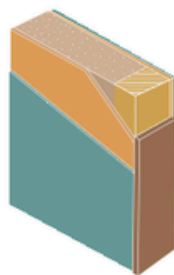


# Specifying Bridgman-IBC

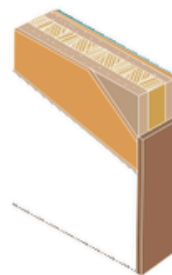
## Door core



**GDC**

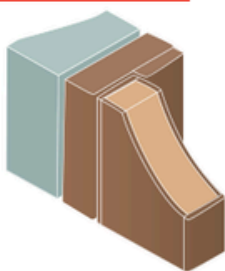


**FLAX STYLE & RAIL**

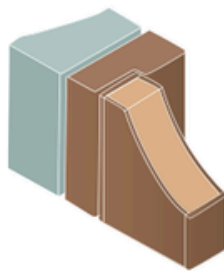


**SOLID LAMINATED  
TIMBER**

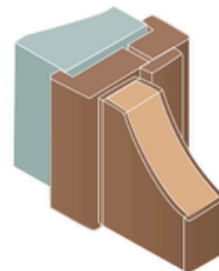
## Frame Type



**PSE**  
Lining with loose stop



**SOLID REBATED**  
Solid section of timber  
with rebate



**WRAP AROUND**  
Integral architrave

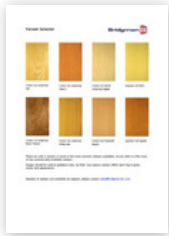
## Materials and finishes

Please contact us on 01429 221 111 to discuss our vast range of doorset materials and finishes that we have available.

DOOR FACE		DOOR FINISH		FRAME MATERIAL		FRAME FINISH	
Extensive range of Real Wood Veneers including Oak, Ash, Maple and Walnut to name a few		Factory Applied Hygienilac		Softwood (NFR and FD30s Only)		Primed or in the white for on-site decoration or factory painted to any RAL colour	
Extensive range of laminates from the UK's leading suppliers and distributors		Laminate		Hardwood			
PVC/Acrovyn		Encapsulated in 2mm PVC. Ideal for clinical and wet environments		Extensive range of solid timber framing available including Oak, Ash, Walnut and Maple to name a few		Factory Applied Hygienilac	
M.D.F		Fully Factory Painted to any RAL colour					
M.D.F / Ext. grade Plywood		Primed or in the white for on-site decoration		Hardwood		Encapsulated in 2mm PVC. Ideal for clinical and wet environments	



Please give us a call on 01429 221 111 to discuss our vast facing options



veneers



laminate



pvc encapsulated

Architrave profiles

Type 1



Type 2



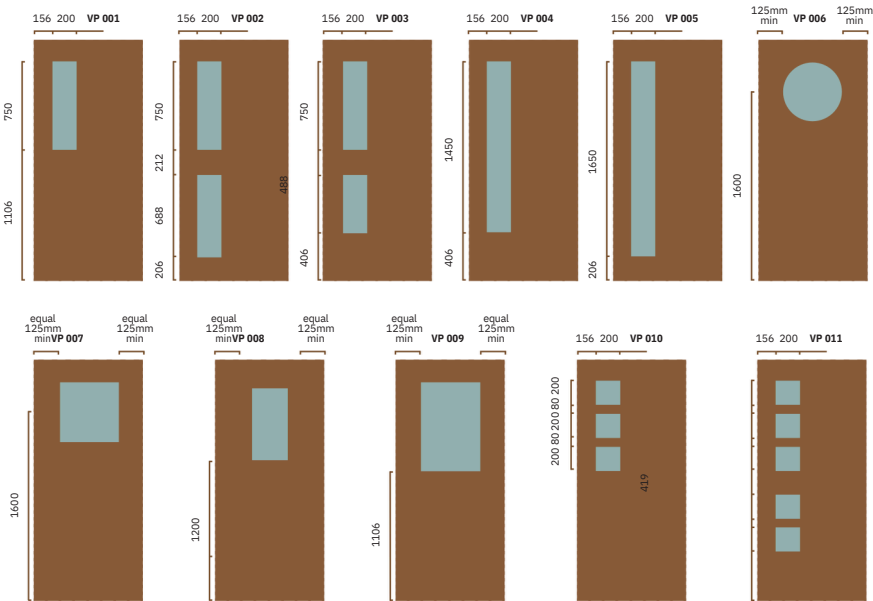
Type 3- Once Pencil Round



Type 4- Twice Pencil Round



Vision Panel arrangements



Bridgman IBC are a bespoke doorset manufacturer that offers the complete doorset package solution for your project. If the facing/frame materials and finishes, architrave profiles and vision panel arrangements are not to the design you're looking for, it is more than likely that we'll be able to manufacture to your requirements and if we can't, we are positive that we'll be able to assist with an alternative solution that works for you.

# Bridgman IBC presents the complete doorset package solution integrating door and frame with architectural ironmongery together with access control security devices, door automation and signage solutions.

The package has been specifically designed and developed for commercial and public sector projects.

The concept has been launched to offer a comprehensive design, scheduling and project management service to deliver a coordinated total doorset package of doors, frames, architectural ironmongery and installation services for your total project requirements.

The products within the range have been carefully selected following in-depth research into the “whole life cycle costs” of ironmongery and performance doorsets, and allow us to offer our total package solution with

comprehensive product performance warranties.

All products specified adhere to the latest British and European standards as well as meeting the requirements of building regulations, BS 8300 and SENDA.

Regardless of size or location of your project, we can arrange training and installation; implement manufacturers' guarantees and arrange ongoing service contracts for the life of your system through our service partners.

Products chosen for range have been selected for their durability and high performance standards combined with a high degree of resistance to physical

abuse and severe frequency of usage found within many commercial and public sector environments.

Alternatively, if you prefer to purchase your ironmongery separately, provide us with samples of your flush bolts and locks for us to factory mortice the ironmongery on our precision CNC machine to help save on, on-site labour.



## **Bridgman IBC Limited**

Longhill industrial Estate  
Greatham Street  
Hartlepool  
TS25 1PU



+44 (0)1429 - 221111



+44 (0)1429 - 274035



sales@bridgman-ibc.com



www.bridgman-ibc.com

The business was established in 1982, and has built a reputation for reliability, quality and service, together with a better understanding of customers' needs. Meeting these needs through our extensive product ranges and project design support also through an experienced team of sales and technical staff who work closely with architects, specifiers, interior designers, shop-fitters and construction companies.

Bridgman IBC Limited is a privately owned business whose management team has over 100 years of experience in the construction products industry.

Located in Hartlepool in North East England, occupying a 100,000 ft² manufacturing area and employing a considerable highly skilled workforce. Bridgman-IBC Ltd has a professional approach to customer service whilst maintaining the approachability and relationship with its customers and clients that reflects a highly committed and resourceful business.

In June 2010, Bridgman purchased the intellectual property rights of Mctavish Ramsay (Scotland's largest doorset provider), Doors by Design and Norlandia Limited.

